

Bryn Mawr College

## Scholarship, Research, and Creative Work at Bryn Mawr College

---

Bryn Mawr College Yearbooks

Bryn Mawr College Publications, Special  
Collections, Digitized Books

---

1931

### Bryn Mawr College Yearbook. Class of 1931

Bryn Mawr College. Senior Class

Follow this and additional works at: [https://repository.brynmawr.edu/bmc\\_yearbooks](https://repository.brynmawr.edu/bmc_yearbooks)



Part of the [Liberal Studies Commons](#), and the [Women's History Commons](#)

[Let us know how access to this document benefits you.](#)

---

#### Citation

Bryn Mawr College Yearbook. Class of 1931 (Bryn Mawr, Pennsylvania: Bryn Mawr College, 1931).

This paper is posted at Scholarship, Research, and Creative Work at Bryn Mawr College.  
[https://repository.brynmawr.edu/bmc\\_yearbooks/28](https://repository.brynmawr.edu/bmc_yearbooks/28)


For more information, please contact [repository@brynmawr.edu](mailto:repository@brynmawr.edu).











Digitized by the Internet Archive  
in 2011 with funding from  
LYRASIS Members and Sloan Foundation

<http://www.archive.org/details/brynmawrcollegey1931bryn>



November 1985

**THE  
BOOK  
OF 1931**

**BRYN MAWR  
COLLEGE**



Mary Summerfield Gardiner

to whom

The Class of 1931

Dedicates this Book





## Board of Editors

*Editor-in-Chief*  
EVELYN WAPLES

*Editors*

ELIZABETH MONGAN

HELEN BELL

CELIA DARLINGTON

*Contributors*

MARY OAKFORD

SYDNEY SULLIVAN

VIRGINIA HOBART

*Art Editor*  
BARBARA KIRK

*Assistant Art Editor*  
ROBIN KREUTZBERG

*Photographs*

MARY FROTHINGHAM

MARGARET FINDLEY

*The campus views are by Reinick Neesen*



## Business Board

*Business Manager*  
VIRGINIA SHRYOCK

*Assistants*

MARGARET FINDLEY  
ETHEL SUSSMAN

VIRGINIA BURDICK  
ESTHER THOMAS





## Freshman Year

LIFE was much more exciting in the old days before we learned how to plan our work and use our Saturdays to the best advantage. That was in 1927 and Sappy and Posey Bailey were still with us, and Palache and Jo Young. In those days we still tried to get food out of Pembroke Kitchen. There was the time when we crawled in, lit on some cans, and crawled out of the darkness to find we had stolen OLD HONESTY fruit salad. It was a coincidence, we said. Angelyn did the split in our little show and all the tall handsome girls were sheiks—Pinkney and Rhys and Helen Bell, etc. It wasn't a very big show, they all called it a skit, but we liked it and remembered to say zebra instead of chipmunk. Freshman Night was not like any other night. Merion procured some fireworks and set them off on the faculty tennis court. I believe there was some trouble about getting out. The freshmen had to get out by the fire escape from Jameson's room because the door was locked. Anyway, next day found Betty Fry and C. T. in their caps and gowns in the Self-Government room.

There was some real drama in Wyndham freshman year.

But there was big May Day. It seemed that college was all folk-dancing and paper flowers that year. (Heh) We had gingerbread men and hot cross-buns to eat. We had to go to Gladys Lenka's soirées in the gym. You had to shake hands with her and then act out what her manner was, proud or affected or naïve. It was the same idea as our natural dancing. And in the heat of May Day was The Apple standing over the costumes, putting in extra hours with Rebecca and disturbing even Mr. Alwyne's quiet depth.

God bless our gracious sovereign,  
Miss Applebee by name,  
That long unto our comfort  
She may both rrule and rreign.



# CLASS OFFICERS

1927-1928



*President* . . . . . CAROLINE THOMPSON  
*Vice-President* . . . . . ELIZABETH BAER  
*Secretary* . . . . . RHYS CAPARN

## SELF-GOVERNMENT ASSOCIATION

*Executive Board* . . . . . ELIZABETH BAER

## UNDERGRADUATE ASSOCIATION

*Advisory Board* . . . . . ETHEL DYER

## CHRISTIAN ASSOCIATION

*Advisory Member* . . . . . PAULINE PARKER

## ATHLETIC ASSOCIATION

*Freshman Member* . . . . . HILDA THOMAS (resigned)  
ELINOR TOTTEN

## COLLEGE NEWS

*Assistant Editors*

EMILY LEWIS

VIRGINIA HOBART

VIRGINIA SHRYOCK

## LANTERN

CELIA DARLINGTON

EMILY LEWIS

## SONG MISTRESS

ANGELYN BURROWS





TOWARDS the end of freshman year, after weeks of intricate mathematical calculations, we realized that 1931 was a doomed group. The class numerals added up to 13. The omen proved only too true. Our high spirits were dampened when on Parade Night, Becky Warfield burned to death in the famous bonfire when someone flung her into it under the impression that she was a hockey stick. The error was not discovered until later.

An unfortunate incident also marred Lantern Night. Miss King, back from her sabbatical in Spain, found the contrast in climate very enervating. This Doña was apt to drop off almost anywhere and on Lantern Night she had cuddled cosily up in a corner of the library roof. Miss King is a sound sleeper and it was not until 1931 "gave tongue" that she rose, a majestic and imposing figure in toreadoric lounging pajamas, and gave her world-famous lecture on the singing line. The darkness and the association of ideas probably account for this; 1931 would have preferred the lecture on listening quality if this had to happen, but conceded none the less that the affair only added to the evening's aesthetic value.

Election night went off better. Dr. Fenwick was to have led a large and devoted group of Norman Thomas supporters in a parade. But after hours of waiting the parade had to be given up. Dr. Fenwick had not appeared. He was curfew and the group of disgruntled girls were about to retire when Taylor Hall was noticed to be shaking violently on its foundations. Some of us entered and discovered our brave Socialist tearing round and round the Juno on his motorcycle. He had lost control of the machine and was unable to stop hurtling about the statue. Some heroic maidens broke into the bookshop, got provisions and tossed them to the unfortunate man as he went by until he ran out of gas.

When Stokowski and his orchestra and Mr. Alwyne and the choir entertained us in our pseudo-Gothic barn we felt that our luck had turned and we were deeply grateful to them for reversing the clouds to show the silver lining. But we were wrong. The last straw came when the liquor ran out at the Christmas party. We were all vexed and a committee of responsible girls headed by Caroline Thompson

called on Mrs. Manning. We gave her Christmas vacation in which to think it over but when we returned, public opinion was firm in rejecting her suspiciously inadequate apologies. Miss Carey was roped in as a substitute because of the sympathy she had shown us in the situation.

When Edna St. Vincent Millay read to us in her smart Virennet model, her expert English accent so won our hearts that we asked her to take over our enthralling Sophomore English course in Miss Donnelly's place. Even Miss Donnelly asked her to take Miss Donnelly's place. But Miss Millay wearily said that her heart was elsewhere. We were puzzled by this but decided she meant "no" as she never reappeared.

After seeing the Duncan Dancers, 1931, always body-conscious, begged Miss Park to make Terpsichore our gracious inspiration. When she refused, 1931 took their revenge by employing the Duncan technique at the Tea Dances. This made us unpopular with the fellers but who is 1931 to surrender its ideals? The year ended in a round of social activities and hoops. We were sorry when no one in 1929, our sister class, received degrees, but we felt this was really deserved after their disgraceful stubbornness about the chapel situation. They kept right on going to chapel in Taylor long after Miss Park started holding it in Goodhart and often frightened timid professors like Miss Swindler by singing hymns and shouting "Amen" in the second floor classrooms at nine o'clock.

Even though by this time we saw what it would lead to, some of us thought that we might return the next year. Miss Carey thought that some of us mightn't and our faith in her was justified when we found that every time she thought this she was right.

P. S.: Here dies The Liars' Club, founded 1927, by Lewis.



# CLASS OFFICERS

1928 - 1929

*President* . . . . . ELIZABETH BAER  
*Vice-President* . . . . . HELEN BELL  
*Secretary* . . . . . LOIS THURSTON

## SELF-GOVERNMENT ASSOCIATION

*Treasurer* . . . . . LOIS THURSTON  
*Executive Board*  
ELIZABETH BAER . . . . . MARIE DIXON  
CAROLINE THOMPSON

## UNDERGRADUATE ASSOCIATION

*Treasurer* . . . . . RHYS CAPARN  
*Advisory Board* . . . . . HELEN BELL

## ATHLETIC ASSOCIATION

*Secretary* . . . . . MARY FROTHINGHAM  
*Sophomore Member* . . . . . ELINOR TOTTEN

## COLLEGE NEWS

*Assistant Editors*  
JAMISON BUNN . . . . . VIRGINIA HOBART  
VIRGINIA SHRYOCK  
*Business Board*  
MARY FROTHINGHAM . . . . . DOROTHY ASHER

## LANTERN

*Assistant Editors*  
CELIA DARLINGTON . . . . . EVELYN WAPLES  
*Assistant Treasurer* . . . . . MARGARET MCKELVY

## VARSITY DRAMATICS

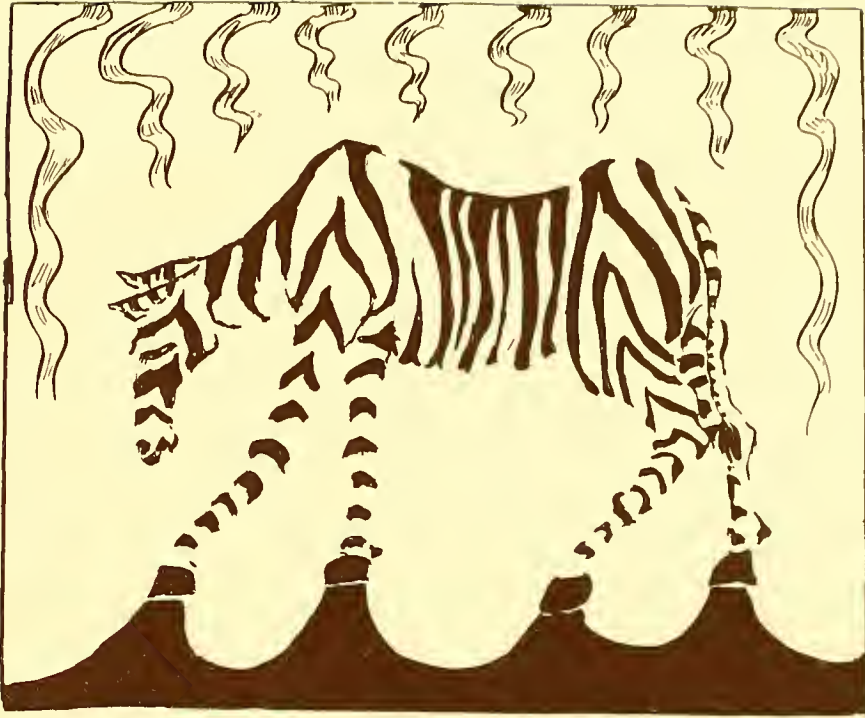
*Board Members*  
CATHERINE RIESER . . . . . HILDA THOMAS

## ART CLUB

*Treasurer* . . . . . BARBARA KIRK  
*Studio Manager* . . . . . ETHEL SUSSMAN

## SONG MISTRESS

SYLVIA SCOTT



## Junior Year

JUNIOR year dawned bright and clear. Now that we were Juniors we could no longer be considered "too young" to understand history of art. We found lots of changes to challenge our growing powers of observation. We found the dean's office inhabited by the Walrus and the Carpenter who in private life turned out to be only our friends Miss Carey and Miss Gardiner. We found too that we could no longer enjoy unmolested the sweet solitude of P.T.'s garden, but we could still find a quiet haven by dropping in at Radnor to see the grads who were happy in the possession of their promised land. About this time we had lots of good resolutions such as passing our orals at the first attempt. Somehow we forgot those resolutions in the excitement over the *exact* interpretation of "medicinal purposes only". One of us even tried to bribe the clerk at Liggett's to tell how much coca cola would really be medicinal. Then they opened the Reserve Room on Sunday afternoon so that we could induce our Sunday afternoon sleep by carefully chosen reading.

Before Christmas we were allowed to enjoy the benefits of Johnnie's and Mary Drake's summer at St ckbridge. After Christmas Miss Park fled from an exam strain to an express strain. Then the freshmen cheered us up with "Palpitating Pinafores" and we sat on the front and smiled encouragingly at them every time the scenery fell down. Miss Carey acted as fashion arbiter for us last spring, but still the good blue jacket seemed cosy and clean and green linen overalls made us feel all light and fluffy.

Spring was accompanied by the first dim stirrings of the coming horror of the unit system. We stopped celebrating Virgil's Bimillennium long enough to evolve sun bathing costumes so marvelous to behold, causing us to hope that the short-sightedness of Professors was more then proverbial. Finally when the heat had become almost too hot and we had eaten almost too much garden party punch, we rushed off to pack our trunk and buy our ticket, for of course we

“Let Anzie Lord put us on board  
S T C A the only way.”

And that we thought, as we leaned over the railing, is the end of that—until next year.



# CLASS OFFICERS

1929-1930

*President* . . . . . LOIS THURSTON  
*Vice-President* . . . . . MARIE DIXON  
*Secretary*  
JANET BISSELL (resigned) . . . . . BARBARA KIRK

## SELF-GOVERNMENT ASSOCIATION

*Executive Board*  
ELIZABETH BAER . . . . . LOIS THURSTON  
MARIE DIXON  
*Secretary* . . . . . HILDA THOMAS

## UNDERGRADUATE ASSOCIATION

*Secretary* . . . . . CAROLINE THOMPSON  
*Advisory Board*  
BARBARA KIRK . . . . . ETHEL DYER  
MARGARET MCKELVY

## BRYN MAWR LEAGUE

FRANCES ROBINSON

## ATHLETIC ASSOCIATION

*Vice-President* . . . . . ELIZABETH BLANCHARD  
*Treasurer* . . . . . MARY FROTHINGHAM

## COLLEGE NEWS

*Assistant Editor* . . . . . VIRGINIA SHRYOCK  
*Business Board* . . . . . DOROTHY ASHER

## LANTERN

*Assistant Editors*  
EVELYN WAPLES . . . . . CELIA DARLINGTON  
*Business Board*  
MARGARET MCKELVY . . . . . ETHEL SUSSMAN

## VARSITY DRAMATICS

*President* . . . . . ETHEL DYER  
*Executive Board*  
MARY DRAKE . . . . . CATHERINE RIESER  
VIRGINIA HOBART

ART CLUB

*President* . . . . . BARBARA KIRK  
*Secretary* . . . . . MARY OAKFORD  
*Treasurer* . . . . . ETHEL SUSSMAN

FRENCH CLUB

*Treasurer* . . . . . GERTRUDE MACATEE

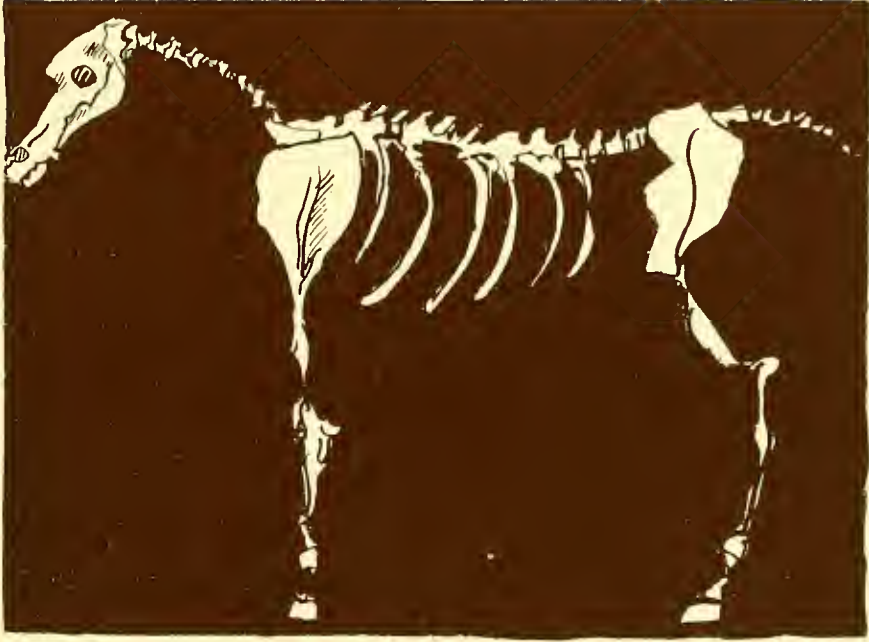
SCIENCE CLUB

*President* . . . . . MARGARET FINDLEY  
*Vice-President* . . . . . MARTHA TAYLOR

SONG MISTRESS

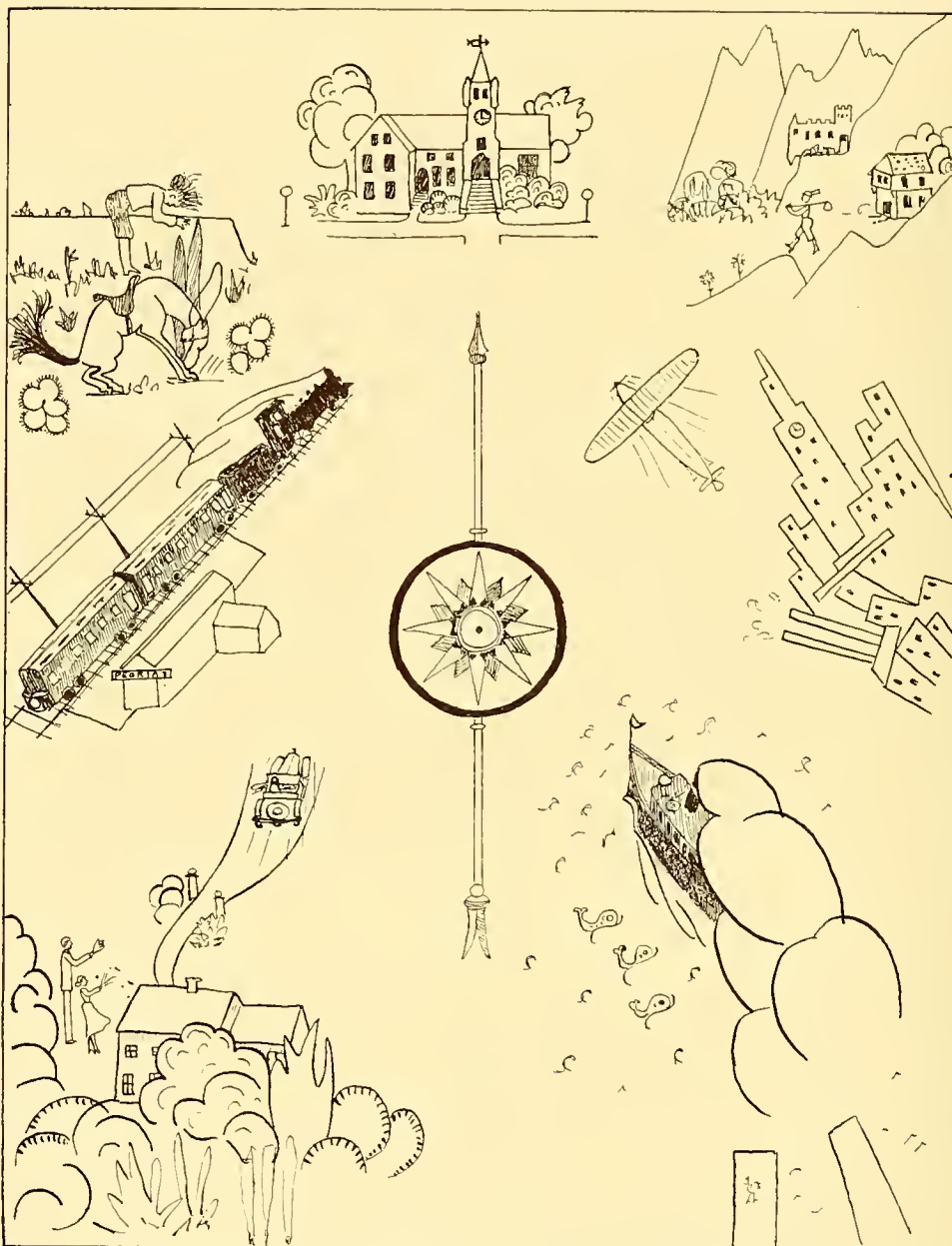
MARGARET NUCKOLS





SENIOR YEAR





**T**HOSE of us who were not killed off during the first week of 1930-31 in the Unit Racket found that it was comfortable being a senior. We also found that there was nothing left except ourselves so we stopped talking and started to toy with the idea of a job.

Paul Hazard lectured and Goodhart burned up. They said it burned up, but the next morning there it was and all the children had slept through the excitement, and the next evening there was Paul Hazard in the gym. So just what did happen is mostly hearsay, but we heard say that Mr. Willoughby fought the

flames like a gamecock and that Mrs. Manning got there fairly promptly.

The Varsity Dramatics gave *The Devil's Disciple* with Haverford and Jasper Dieter. Mr. Dieter was exciting, may we say, and everyone felt that if we could have lived up to his standard of emotion and that if Haverford could have done the same, and if the play chosen had been another play chosen, and if there had been more cooperation from the student body, that the charred hall would have been filled. As it was, Merion seniors gave a dinner party (ostensibly to show the men that college women are *not* pampered), and trooped down to the play afterwards, looking really quite attractive in their long dresses and rouged lips, and took up two rows of seats.



After that nothing happened at all, but winter fell down and then Christmas and no one can remember anything but work which is an excellent tribute to Betty Perkins, Eliza Boyd and all the other old masters, God rest their memories. Who'd have thought that we'd "do it and like it" to quote the talking pictures. A change was coming over the smoking rooms at about this time. Often the long winter evenings were spent in murdering and gammoning.

Goodhart having shown it was fireproof, two Soutiens were procured for the commons room, and friendly pictures they are too.

Came the Spring and the Printer. The board of editors is about to break into wails at this point. How can the college go on and 1931—far away? Then we sang our class song about the star and Bryn Mawr and it had its usual bracing effect.



## May, 1931. Art or English Examination

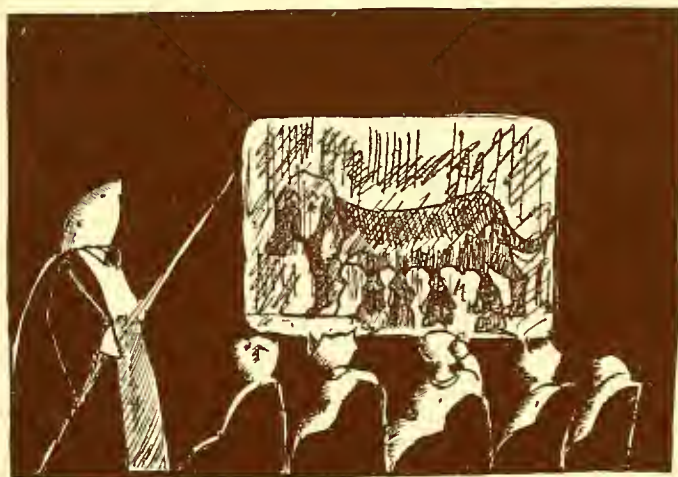
TIME: Six hours

- I. (a) Identify passages.  
(b) Compare with: Thomas Aquinas  
Conan Doyle  
Paul Fort  
(c) Use them in sentences.

\* \* \* \*

- I. (c) Answered:

We came to pass,—when fullest freest forms had not yet been developed,—and we come to go—man must endure their going hence even as their coming hither,—and further there were none.



*"Just the Most Private Thing in the World"*

# CLASS OFFICERS

1930-1931

*President* . . . . . ELIZABETH BAER  
*Vice-President* . . . . . ELIZABETH MONGAN  
*Secretary* . . . . . BARBARA KIRK

## SELF-GOVERNMENT ASSOCIATION

*President* . . . . . LOIS THURSTON  
*Vice-President* . . . . . ELIZABETH BAER  
*Executive Board* . . . . . ELIZABETH MONGAN

## UNDERGRADUATE ASSOCIATION

*President* . . . . . HELEN BELL  
*Vice-President* . . . . . MARGARET MCKELVY  
*Chairman of Speakers' Bureau* . . . . . CAROLINE THOMPSON  
*Head Usher* . . . . . ETHEL DYER

## ATHLETIC ASSOCIATION

*President* . . . . . MARY FROTHINGHAM

## COLLEGE NEWS

*Copy Editor* . . . . . VIRGINIA SHRYOCK  
*Business Manager* . . . . . DOROTHY ASHER

## LANTERN

*Editor-in-Chief* . . . . . EVELYN WAPLES

### *Editors*

CELIA DARLINGTON . . . . . BERTHA FAUST

### *Business Managers*

ETHEL SUSSMAN . . . . . SYLVIA MARKLEY

## VARSITY PLAYERS

*President* . . . . . ETHEL DYER  
*Executive Board* . . . . . MARY DRAKE  
*Business Manager* . . . . . MARGARET MCKELVY

## ART CLUB

### *Managers*

BARBARA KIRK . . . . . MARY OAKFORD

FRENCH CLUB

*President* . . . . . GERTRUDE MACATEE  
*Secretary* . . . . . VIRGINIA SMITH

SCIENCE CLUB

*President* . . . . . MARGARET FINDLEY

GLEE CLUB

*President* . . . . . MARGARET SHAUGHNESSY  
*Business Manager* . . . . . FRANCES TATNALL

SONG MISTRESS

MARGARET NUCKOLS





"LIFE IS A  
CREAM SEPARATOR"

FANNY got up at seven to take her own and everyone else's books back to the library before eight o'clock. She ate her fruit and wheatena slowly and went to sit in the smoking room with a box of matches always ready while her class smoked. Nine o'clock found Fanny lending pencils and handkerchiefs to the psychology class. At eleven one could see her hurrying to the library with milk bottles, straws and crackers for her friends and others. Eleven-fifteen and she had washed them out and returned them to the kitchen. At lunch she ordered milk to give away the cream. She never had her maraschino cherry. Two o'clock found Fanny at the bank. At three o'clock and four o'clock Fanny was still at the bank. Five o'clock and Fanny was at the A. & P. It took three trips to get all the money and groceries home. She read her books in the reserve room because somebody else might want one, and she could always read something else. Fanny insisted on washing dishes. Fanny was a freshman.



SEDGEWICK rose at nine minutes after nine. Sedgewick used any tooth brush on the washstand if she wasn't too rushed. Nine-eleven found Sedgewick slipping into class before the door closed, with the signing-out pencil. Sedgewick read all the magazines in the book shop, there. Sedgewick signed "Smith" when she took books out of the Art Seminary and she kept them till she read them. She had a key and lock put on the Carola Woeshonhoffer door. Sedgewick checked every vocation. Sedgewick liked her tea. At dinner she dumped

her ice cream into the marshmallow-sauce bowl. Sedgewick found all the bicycles locked when she wanted to go to the movies, but Sedgewick found a key. At eight one could have seen her climbing from the bicycle into the ladies' window of the Seville. At ten o'clock she walked out of the Seville. There was a policeman so she

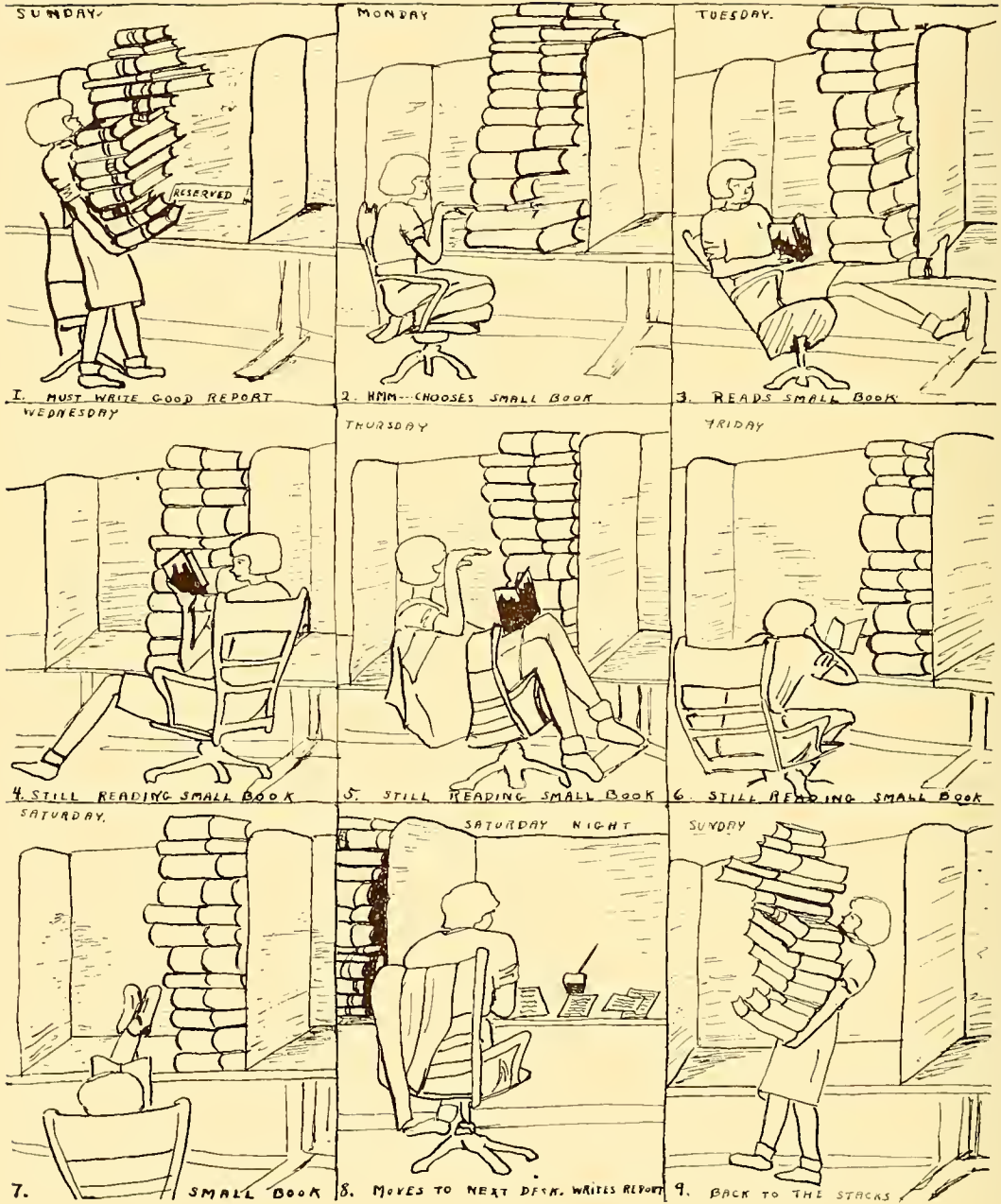


had to leave the bicycle. Sedgewick had a soda at Powers and Reynolds and charged it to Mrs. Manning. Sedgewick saw every movie and got her High C's. Sedgewick had to thumb her way home. From eleven to twelve Sedgewick bathed. She took the stopper of her favorite tub back to her room. Sedgewick was a senior.





# THE LONG REPORT



## Lament For The Lobster



Take her up tenderly,  
Lift her with care;  
Fashioned so slenderly,  
Young and so fair!

Count her antennae—  
Sweet! and so many!  
Ammonia constantly  
Drips from her claws,  
Take her up instantly,  
Oh, do not pause!

Scrape off the muscle  
From each vital part,  
The fair snowy muscle;  
Then manfully tussle  
To tear out her heart.

Touch her not scornfully,  
Think of her mournfully,  
Gently and humanly;  
Noting the sex of her,  
Full lower decks of her:  
She is pure womanly.

Ere her limbs frigidly  
Stiffen too rigidly  
Decently, kindly,  
Remove and dissect them,  
With care to respect them,  
Cutting not blindly.

What's her exopodite,  
Where's her protopodite,  
Is her epipodite  
Under her gill?  
Where are they? Drowned in  
The sea she swam round in?  
Or did they get ground in  
Her own gastric mill?

Draw them and label them,  
Count them and table them,  
Docile and dutiful;  
When you have done her  
Remember her honor:  
Death has left on her  
Only the beautiful!

Take her up tenderly  
Lift her with care;  
Fashioned so slenderly,  
Young and so fair!





## How Sleep the Brave

How sleep the brave who sink to rest  
By next day's quizzes unoppressed!  
H. C. with dewy fingers cold,  
Shall never deck their hallowed mould;  
They care not: to them sweeter far  
Plain merits than High credits are.

Thoughtless of honor they sleep on,  
Nor rouse to sound of bells at dawn;  
Happy in mediocrity,  
They dream of M., they scorn H.C.—  
But thither, sometimes, shall repair  
Passed Minus, weeping through her hair.

## NASHIATIONS

Anyone who argues with the Dean's office  
Has to be something of a Sophist.

We'd nominate Mrs. Lyoll for the Hall of Oblivion  
If we didn't think it would utterly spoil her joy of livion

Girls are advised to "avoid the birdin"  
Of the bearded Dr. Herben.

Eddie King  
Is what they call an "Art boy," we thing.

G. G.'s course of Art and the Birble  
Gives her students a lot of trebble.

We think it's swell to feel the urge  
Of art, like Beatrice McGerge.

The fact that Norton's aesthetic in purple  
Shows that she's G. G's ardent discerple.

Virgil's Bimillenniun  
Was celebrated by a lot of people and not enjoyed  
much by any o' 'em.

Miss Donelly  
Talks fonnily.

Miss Petts  
Co-ordinets.

We've got the hots on  
Doctor Watson.

Now, Nahm,  
Come, Come!

---

## TIME

Little stars above my head,  
How I wish I were in bed.  
One more page  
One more line,  
Quizzes always come on time.



## 1927-1928

### HOCKEY

Won by 1928

E. BLANCHARD, *Captain*  
 H. ADAMS  
 I. BENHAM  
 E. THOMAS

E. BAER  
 V. HOBART  
 C. REISER

F. TATNALL  
 L. SANBORN  
 E. WAPLES  
 C. THOMPSON

### WATER POLO

E. BAER, *Captain*  
 A. BURROWS  
 M. FROTHINGHAM

D. ASHER  
 E. BLANCHARD

H. THOMAS  
 E. TOTTEN  
 E. WAPLES

### BASKETBALL

E. BAER, *Captain*  
 E. TOTTEN

H. THOMAS  
 E. BLANCHARD

K. SAPPINGTON  
 B. HUMPHREYS

*On Varsity*—E. BAER, E. BLANCHARD, B. HUMPHREYS

### SWIMMING

M. FROTHINGHAM  
 E. BAER  
 A. BURROWS

E. BAILEY  
 D. ASHER

M. NUCKOLS  
 E. TOTTEN  
 E. WAPLES

*On Varsity*—A. BURROWS, M. FROTHINGHAM

## 1928 - 1929

### HOCKEY

Won by 1932

E. BLANCHARD, *Captain*  
E. BAER  
H. ADAMS  
E. THOMAS

E. TOTTEN  
E. TATNALL  
J. MOORE

E. WAPLES  
I. BENHAM  
M. FROTHINGHAM  
C. REISER

*On Varsity*—E. BLANCHARD, C. REISER

*Substitutes*—H. ADAMS, E. THOMAS

### SWIMMING MEET

Won by 1931

A. BURROWS  
E. TOTTEN  
D. ASHER

E. THOMAS  
E. BAER

M. FROTHINGHAM  
H. THOMAS  
R. LEVY

*On Varsity*—E. TOTTEN, A. BURROWS, M. FROTHINGHAM, E. THOMAS

### WATER POLO

*On Varsity*—M. FROTHINGHAM, E. TOTTEN, A. BURROWS

*Substitute*—D. ASHER

### BASKETBALL

E. BLANCHARD, *Captain*  
J. MOORE

E. TOTTEN  
B. HUMPHREYS

E. BAER  
M. DIXON

*On Varsity*—E. BLANCHARD, E. BAER, E. TOTTEN

All-Round Championship Won by 1931

## 1929 - 1930

### HOCKEY

Won by 1933

E. BLANCHARD, *Captain*  
E. WAPLES  
M. TURNER  
I. MOORE

E. TOTTEN  
F. TATNALL  
L. SNYDER

E. BAER  
I. BENHAM  
E. THOMAS  
E. DOAK

*On Varsity*—E. TOTTEN, E. BLANCHARD, E. THOMAS

### SWIMMING MEET

Won by 1933

E. THOMAS  
D. ASHER

M. FROTHINGHAM  
A. BURROWS  
E. WAPLES

R. LEVY  
D. FERGUSON

*On Varsity*—M. FROTHINGHAM

### BASKETBALL

Won by 1933

F. TATNALL, *Captain*  
E. THOMAS  
L. SNYDER

L. THURSTON  
J. MOORE

M. FROTHINGHAM  
M. DIXON  
M. TURNER

*On Varsity*—E. BAER, *Captain*, E. TOTTEN

### FENCING

K. CONE

E. TOTTEN, *Captain*  
E. BAER

TENNIS  
C. THOMPSON  
C. GRISWOLD

M. FROTHINGHAM  
E. MONGAN

## 1930-1931

E. TOTTEN, *Captain*  
E. BAER  
I. BENHAM

HOCKEY  
E. DOAK  
M. TURNER  
F. TATNALL  
E. WAPLES

M. FINDLEY  
M. FROTHINGHAM  
E. THOMAS

*On Varsity*—E. BAER, *Captain*, E. TOTTEN, E. THOMAS

R. LEVY

SWIMMING  
E. THOMAS  
M. FROTHINGHAM

A. BURROWS

*On Varsity*—M. FROTHINGHAM

F. TATNALL  
L. THURSTON

BASKETBALL  
M. TURNER  
G. MACATEE  
A. BURROWS

M. FINDLEY  
J. MOORE

*On Varsity*—E. BAER, E. TOTTEN

E. BAER

YELLOW BLAZERS AND INSIGNIA  
E. TOTTEN

M. FROTHINGHAM

E. BLANCHARD

CLASS BLAZERS AND INSIGNIA  
A. BURROWS

E. THOMAS

H. ADAMS  
D. ASHER  
I. BENHAM  
E. DOAK

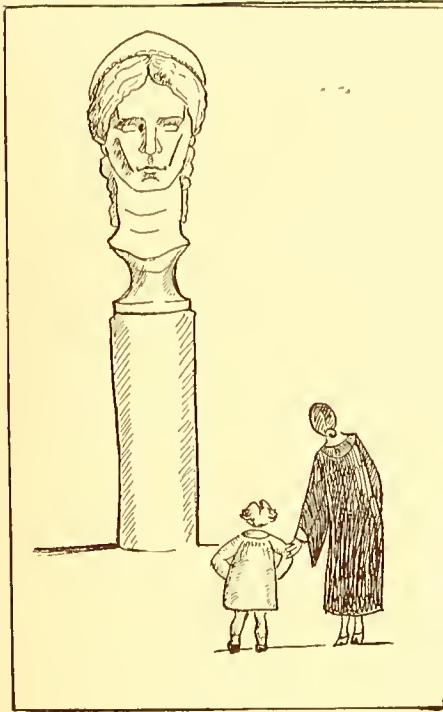
CLASS BLAZERS  
V. HOBART  
B. HUMPHREYS  
J. MOORE  
L. SNYDER

H. THOMAS  
C. THOMPSON  
L. THURSTON  
E. WAPLES







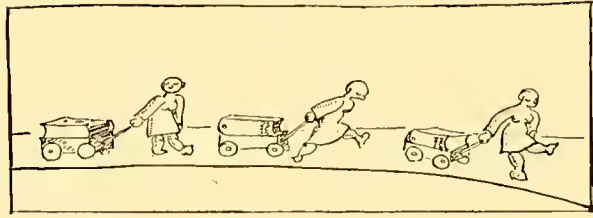


“Aw . . .”



## QUAIRIES ?

1. Mr. Chadwick-Collins.
2. The Unit System.
3. What happens in Chapel.
4. Whether Mr. Alwyne is an only child.
5. What state Dr. Fenwick comes from.
6. Whether Miss Garvin is Marlene or Greta.
7. Whether the faculty read the YEAR BOOK.
8. What a week-end at Bryn Mawr is like.  
(or 9a: What a week-end away from Bryn Mawr is like.)

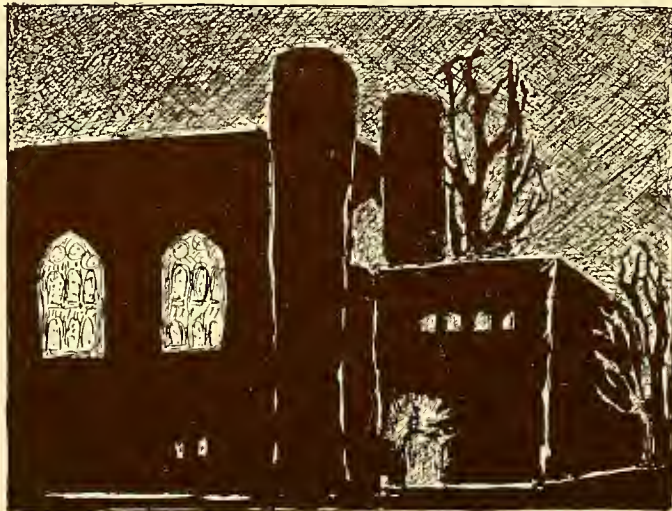


## Ancient Painting

MARY H. SWINDLER

*Yale University Press, New Haven, 1929*

IT TOOK only a glance at this slender pamphlet to show our astute little minds that there was far too much action in it. Because of this the plot is difficult to follow. Murder succeeds murder and the accumulation of excitements only serves to obscure the author's thesis: "That the feeding of tennis balls to babies is responsible for the wretched facilities found on the Paoli local." Her truly pornographic realism foreshadows the technique seen in the style of the new suburban station and this does not justify the unrhymed couplets that begin and end every paragraph and which only serve to confuse the reader. Dr. Swindler is obviously out of her depth when she takes up the cudgel in the indirect lighting versus longer skirts controversy. She joins hands with Bertram Russel in asserting that the race will eventually benefit by the increasing use on the Bryn Mawr campus of ocean sand as furniture in the girls' rooms. In finishing we can only say that Dr. Swindler has obviously not devoted enough time to thinking out the problem with which she is confronted.



## I Sent A Message

I sent a message to the Dean,  
I told her  
This is what I mean.

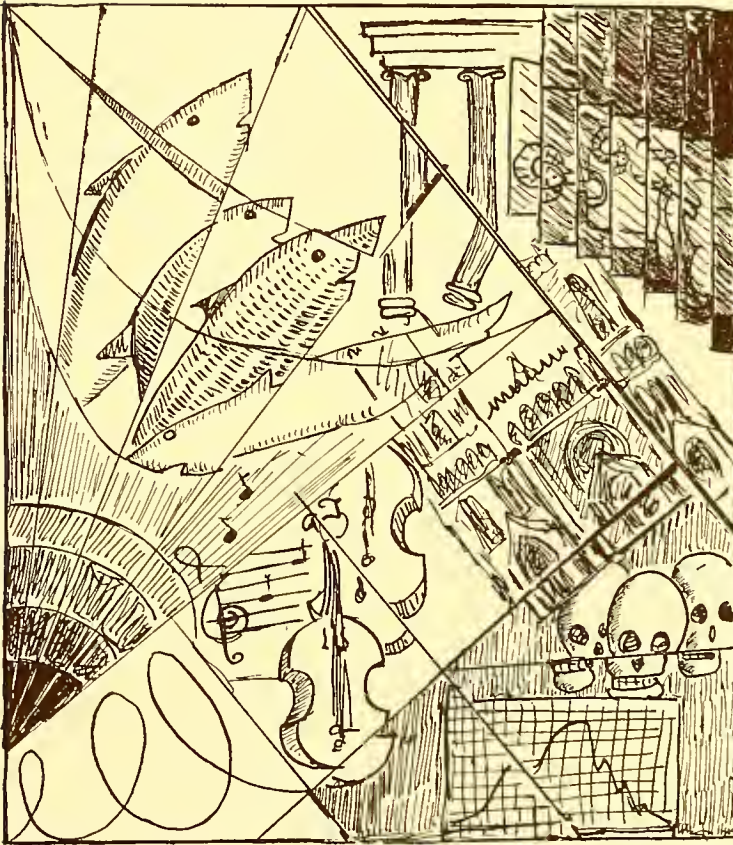
I went again to her to say  
It would be better far my way.

I said it once; I said it twice,  
I tried to make it sound quite nice.

I went again in Senior Year;  
By now I had quite lost my fear.

She very slightly turned her head  
And asked me what it was I said.

"I only wondered if we could  
Have left the bushes where they stood."



## "You Must Never Go Down to The End of The Town If You Don't Go Down With Me."

ON FEBRUARY 9th of this year a group of some five or more students were waiting in Mrs. Lyle's office. Some of them wanted to see Mrs. Manning; some of them Mrs. Manning wanted to see. All of them were becoming restive as the minutes slipped by and still no smug or terrified girl had opened the door and walked out. Mrs. Lyle was uncommunicative. They carried on a desultory conversation and hoped the one sitting nearest the door would remember that they were there first. For the ninety-ninth time they wondered why just one of the legs of the files was made of glass instead of the conventional light wood. For the ninety-ninth time they wondered what girl was in there and what they should say when they got in. The minutes passed the half-hour limit. Finally a head-professor walked in. He said he wanted to see Mrs. Manning. Mrs. Lyle said that someone was seeing her but that she thought she'd be through in a minute. The head-professor leaned against the wall and looked at the row of unimpressed girls, with the calm expression of a thwarted head-professor. Mrs. Lyle went on typing. The girls gave long, loud sighs to prove they couldn't wait much longer. The head-professor walked up to Mrs. Lyle again.

"Will you kindly tell Mrs. Manning that I'll have to see her for only a minute."

Mrs. Lyle felt bullied. She went and knocked softly on the Dean's door. There was no answer. She knocked again. Again no answer.

"Open the door," said the head professor.

Mrs. Lyle opened the door. Every one crowded in. They looked under the desk, and they looked at the ceiling. The large room was vacant. The door into the hall was slightly ajar. Mrs. Lyle, the head professor and the five girls went out of this door. Mrs. L. went straight to Miss Park. The little parade followed and grouped itself around the door. Mrs. L. knocked here and at once the cheerful voice of Mrs. Manning cried:

"Come in."

Mrs. Lyle opened the door. Mrs. Manning was sitting by the window reading *Vogue*.



## Silhouette in Smoke

As a child King presented certain difficulties to his family. He did *not* have an artist's fingers. He did *not* show an early tendency to amass wealth, and he was shy with girls. Always reticent, it was not until he became of age that they discovered in what direction his genius lay. They were surprised. They found him on the night of his twenty-first birthday experimenting with his nose and a candle, in his little night shirt in the cellar. They did not beat the boy. And indeed it was due to the considerate treatment of his parents throughout this difficult period that he is the foremost man of his profession today. In 1913 he gave up the stage and entered Bryn Mawr College, but the girls only served to make him retreat farther into his shell. They tell an anecdote which is doubtless exaggerated, that Miss Garbo tracked him for forty-one days on a ranch in Wyoming, and when she finally caught up with him and asked him for a lesson he diagnosed her there in the desert, jiddering with confusion, under condition that she tell no one of their interview, which doubtless accounts for her success on the screen today.

Actors and bishops never like him; he is too intelligent for them, and too diffident to hide his intelligence out of kindness. He is often unintentionally inconsiderate and will listen for hours to people who don't know or care what he is listening about. It has been observed more than once that those who know him best like him the most.





## Study Bred

Tell me, where is study bred  
Or in the Lib., or in the bed,  
How begun—how nourished?

It is engendered in the fear  
Of daily quizzes. Leisure dies  
In the smoker where it lies.  
Let us all ring leisure's knell,  
I'll begin it. Ding, dong, bell.





## The Sad Story of Mickey, The Country Cousin

IT WAS the first day of spring and the girls all had on their little white socks and sometimes their little red overalls. Micky, the country cousin, coming to call for the first time, hit Bryn Mawr first at Rock arch. He didn't like what he saw there. Two girls stood in front of the hard wall, about a foot from it, with the tops of their heads pressed firmly against it. From this position they rotated slowly around never removing their head tops from the wall. They eyed him as they rotated. He eyed them. He tried to exchange a smile with them but his spirit flagged and he walked on instead. A little farther up the walk, two girls were leaning against a lamp-post. They sang, "Oh, cavemen we look like and cavemen we act like, and cavemen we are without a doubt." Still farther along he found two girls measuring the lawn in front of the library with a ruler, and he began to get nervous. Nothing else happened for quite a while but the sight he saw on Merion green turned him pale. Over twelve full-grown women dressed in Tyrolean or Bavarian jackets and caps were playing drop the handkerchief, he thought it was drop the handkerchief, but it might have been go in and out the windows. This thing was general then. He couldn't remember that Ursinus was like this but then Ursinus was a coed college. The poor man didn't like to interrupt their little amusements by asking which hall Denbigh was, so he went to the nearest building which was Merion. He hadn't a chance to ring the bell because of the girls that kept running out of the door and upsetting him. They all had hard faces, he decided. He finally asked one if that was Denbigh Hall. She looked at him shrewdly. "Do you want to see Miss Shryock?" No, he didn't and said so. "Then you're not about the YEAR BOOK," she said, and gave a sigh of relief and walked away. The kindly lad became tearful. The next girl who came out told him to go on in, because he could wait forever out there. He went in and put his hat on the table. It was reassuring to see it there, like an everyday object on a common table. After a minute one of them rushed in and picked up his hat. He tried to grab it but she told him it was elections. It didn't make any difference to him. It's all up now, he said to himself several times. Two others came in the door and slipped out of their shoes. With a run and kick, they each sent a shoe hurtling down the hall. Then they backed up and hurtled the other shoe. Then they went to get them. They talked about Buddha. Our miserable friend sat down on a corner of the sofa. Two more came in the door. He watched as one began to sidle gently around the room, her back to the wall, her arms outstretched. They talked of companionate marriage and a wave of pity swept over the man on the sofa. He hadn't realized it was like this with his little cousin. Now and then he asked soothingly if it were Denbigh Hall, but though they seemed to listen intelligently to him it was plain that their minds were not there. At last he despaired of recovering his hat and walked out again, out past the romping women in Bavarian jackets, past the queer little old things measuring the lawn, and back through Rockefeller arch, a gentler, wiser man.

# Composition as Explanation

BY GERTRUDE STEIN

*Hogarth Press 1926*

*Reviewed and Explained*

AND having seen her handwriting one sees naturally naturally clearly on obviously seeseses. Sees happened naturally natural publisher poor poor dear old publisher naturally drivvel is drivvel is livel is lively is livelihood drivvel. Drivvel? livelihood. Drivvel is not drivvel. Is it it is handwriting which is hard of course but not o no never drivvel bosh bosh no. Is good good but good. Say good why not say good is very. If mistake mistaken about. Mistaken no livelihood therefore therefore and so it is good said that publisher. Debtors prisons being too full already with the nobenefitofdoubttogreatandfamouswriters—publishers. Take no chances. Benefitofdoubt such person she may be. Maybe she or maybe not but maybe. He says maybe. There is excessive danger in under-rating such a person as maybe she is. Benefitofdoubt a such person (benefitof doubt me please said that publisher) should hardly dare should not dare dare not should hardly dare not publish dareonly accept no choice but accept publisher says. Sez he.







# FACULTY PICTURES

In Memory  
of  
Theodore DeLaguna

		(Alwyne) Giodhari Labour Problems (F)		Chemistry Laboratory Geology Laboratory (D)	Chemistry Laboratory (Lamborn) Geology Laboratory (Dryden) Dalton		
	ADVANCED	Biology Laboratory (Gardiner) Dalton Physics Laboratory (Huff) Dalton		Biology Laboratory (Gardiner) Dalton Physics Laboratory (Huff) Dalton			
		History of Art: Renaissance Sculpture (G. G.) Constitutional Law (Fenwick) D		History of Art: Renaissance and Baroque Architecture (E. S. King) G Politics: Constitutional Law (Fenwick) D			
		Laboratory (D) Laboratory (Gardiner) Dalton Laboratory (Huff) Dalton		Laboratory (D) Laboratory (Gardiner) Dalton Laboratory (Huff) Dalton	History of Art: Renaissance and Baroque Architecture (E. S. King) G Politics: Constitutional Law (Fenwick) D		German Classical Latin, I
3	ADVANCED	History of Art: Renaissance and Baroque Architecture (E. S. King) G		History of Art: Renaissance and Baroque Architecture (E. S. King) G Literature of (M. P.)			English: French History German
	ELLECTIVE	Reading of Prose Authors (S. A. King) Library I		Reading of Prose Authors (S. A. King) Library I			English: Music: Always
				Psychology Seminar			English: Wood Economic History Italian Psychology English Child Psychology
4							German German Latin, I English
5							



JUNIOR YEAR  
 FIRST YEAR  
 SECOND YEAR  
 12  
 ADVANCED

German, Dr. G. Hoch  
 History of Art, Remi  
 King G.  
 Italian, Professor M.  
 Mathematics, Div. B-1



German, Dr.  
 German, M.  
 German, Dr.  
 German, Dr.  
 German, Dr.



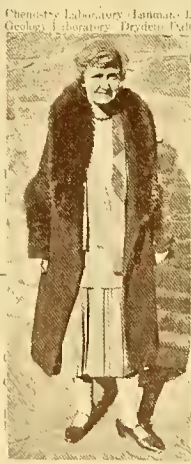
German  
 History  
 King  
 Italian  
 Mother  
 Chemie  
 German  
 History  
 Latin  
 Psycho



English: Etymology of the 17th Century, A. B.  
 French: Historical Background, C. M.  
 Greek: Wrabi, Olfers, The Library  
 History: Ancient Civilization, Dalley  
 Music: Let's Sing, History and Art  
 Physics: Goethe, N.  
 Labour: Problems, E. G.

English: Literature, Deane, Chew, R.  
 Mathematics: Advanced, F. C. B. H. G.  
 History: Roman Empire, Dalley  
 History of Art: Art of Far East, E. S. King, G.

English  
 French  
 Greek  
 History  
 Music  
 Physics  
 Labour



SOLID  
 VI  
 VII  
 VIII  
 IX

Chemistry Laboratory, Lanman, Dalton  
 Geology Laboratory, Dryden, Dalton  
 German, Dr. G. Hoch  
 History of Art, Remi King G.  
 Italian, Professor M.  
 Mathematics, Div. B-1

German, Dr.  
 German, M.  
 German, Dr.  
 German, Dr.  
 German, Dr.

German  
 History  
 King  
 Italian  
 Mother  
 Chemie  
 German  
 History  
 Latin  
 Psycho



Lanman, Dalton  
 Dryden, Dalton  
 Gardner, Dalton  
 Hoff, Dalton





MONDAY  
TUESDAY  
WEDNESDAY



MONDAY  
A  
M. M. I.  
D. B.  
C. W. H.  
J. W. H.  
D. H.  
S. A.  
D. D.  
A. H. H.



WEDNESDAY  
THURSDAY  
FRIDAY

ONE DAY  
B

Div. C. M. M. Div. S.  
-L. M.  
B. H. H. or D. H. H.  
C. H. H. or D. H. H.  
C. H. H. or D. H. H.  
C. H. H. or D. H. H.  
C. H. H. or D. H. H.  
C. H. H. or D. H. H.

Geog.  
Geog.  
Geog.  
Geog.  
Geog.  
Geog.  
Geog.

9

SECOND YEAR  
History of Art, Painting  
Geog. 44  
Mathematics, Calculus  
Spanish, Literature

History of Art, Painting  
Geog. 44  
Mathematics, Calculus  
Spanish, Literature

History of Art, Painting  
Geog. 44  
Mathematics, Calculus  
Spanish, Literature



History of Art, Painting  
Geog. 44  
Mathematics, Calculus  
Spanish, Literature



History of Art, Painting  
Geog. 44  
Mathematics, Calculus  
Spanish, Literature

ADVANCED  
C. H. H. or D. H. H.  
C. H. H. or D. H. H.  
C. H. H. or D. H. H.  
C. H. H. or D. H. H.

C. H. H. or D. H. H.  
C. H. H. or D. H. H.  
C. H. H. or D. H. H.  
C. H. H. or D. H. H.

C. H. H. or D. H. H.  
C. H. H. or D. H. H.  
C. H. H. or D. H. H.  
C. H. H. or D. H. H.



C. H. H. or D. H. H.  
C. H. H. or D. H. H.  
C. H. H. or D. H. H.  
C. H. H. or D. H. H.



C. H. H. or D. H. H.  
C. H. H. or D. H. H.  
C. H. H. or D. H. H.  
C. H. H. or D. H. H.



C. H. H. or D. H. H.  
C. H. H. or D. H. H.  
C. H. H. or D. H. H.  
C. H. H. or D. H. H.



C. H. H. or D. H. H.  
C. H. H. or D. H. H.  
C. H. H. or D. H. H.  
C. H. H. or D. H. H.

10

W. H. H. or D. H. H.  
C. H. H. or D. H. H.  
C. H. H. or D. H. H.  
C. H. H. or D. H. H.

W. H. H. or D. H. H.  
C. H. H. or D. H. H.  
C. H. H. or D. H. H.  
C. H. H. or D. H. H.

W. H. H. or D. H. H.  
C. H. H. or D. H. H.  
C. H. H. or D. H. H.  
C. H. H. or D. H. H.



W. H. H. or D. H. H.  
C. H. H. or D. H. H.  
C. H. H. or D. H. H.  
C. H. H. or D. H. H.



W. H. H. or D. H. H.  
C. H. H. or D. H. H.  
C. H. H. or D. H. H.  
C. H. H. or D. H. H.



W. H. H. or D. H. H.  
C. H. H. or D. H. H.  
C. H. H. or D. H. H.  
C. H. H. or D. H. H.



W. H. H. or D. H. H.  
C. H. H. or D. H. H.  
C. H. H. or D. H. H.  
C. H. H. or D. H. H.



W. H. H. or D. H. H.  
C. H. H. or D. H. H.  
C. H. H. or D. H. H.  
C. H. H. or D. H. H.





Orer Dalton  
 Wells G  
 Div. B (Robbins) D  
 Barnes Dalton  
 Div. B (Leuba) F  
 Gillet N  
 Romantic Period  
 Literature (Cann)  
 Watson Dalton  
 Literature (M. D.)

Biology (Or) Dalton  
 Classical Archaeology: A  
 ferri G  
 Latin, Div. C (Taylor)  
 Physics (Barnes) Dalton  
 Spanish (Sweeney) N



ADVANCED

Chemistry: Physical (Cre)  
 Mathematics: Theory of  
 Philosophy: Recent Tende

ELECTIVE

Life and Teaching of Jesus  
 Principles of Education (E)  
 Modern French: Fendler  
 Social Anthropology (Mar)



Robb  
 Div. C  
 Div. C  
 Div. C  
 Div. C

To  
 History and Appreciation  
 Social A

REQUIRED

English Composition (Gib, Goodell, Wakeman,  
 Woodworth, Collins) F, B, C, D, R, T

FIRST YEAR

English Literature (Garvin) F, B, I, R, S  
 Latin, Div. A (Broughton) A  
 Mathematics, Div. A (Lehr) C

SECOND YEAR

Biology (Gardiner) Dalton  
 Biology (Or) Dalton  
 Ancient Architecture



Smith D  
 G. de Laguna M  
 L.  
 Literature (Mesger) K  
 The Library  
 seats (Rogers) Library I  
 Interpoint (Willoughby)



B  
 B  
 E  
 H  
 P  
 P  
 E  
 C  
 P  
 S



English

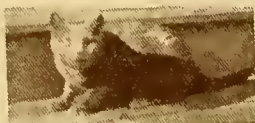
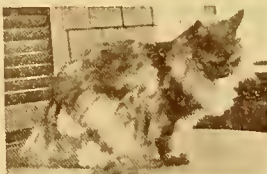
German,  
 History



Italian: Leonardo M  
 Div. B (Hedlund) R  
 Preshaw Dalton  
 (Sawyer) A  
 Social Civilization (David) D  
 (Broughton) K  
 Animal Behaviour (Leuba) L  
 Literature of the 17th Century: Gk  
 Historical Background (Cann) I  
 Office, The Library  
 ent Civilization (Ballou) L  
 Year History and Apprecia



 <p>Life and Teaching Principles of Modern French Social Anthropology</p>	 <p>Introduction to Music: Advanced</p>	 <p>English Composition: Woodworth</p>
 <p>English Literature: Latin, Div. A Mathematics: I</p>	 <p>Biology (Gardner) Biology (Orr) D. Classical Architecture (Mueller) G</p>	 <p>Biology (Gardner) Biology (Orr) D. Classical Architecture: Roman Art (Swindler) G</p>
 <p>History: U. S. (W. R. Smith) D Italian Philosophy</p>	 <p>French: German: Greek (S) Psychology</p>	 <p>English: Old Greek (Wright) Psychology: M Child Psychology</p>
 <p>German, Div. I History: King) C Italian (E) Mathematics</p>	 <p>Chemistry: Greek: T History: Latin: T Psychology: Animal Behaviour (Leuba) Lib: I</p>	 <p>German (M. De) Italian (Lograsso) Latin, Div. D Philosophy, Div. I Chemistry (Cro) Greek Literature Latin: Literature (Layton) Psychology: Animal Behaviour (Leuba) Lib: I</p>







# Senior Pictures

## Consummation

*Reprinted, by special permission, from the Lantern*

My life has been no more than smooth bright wings  
Folded against the shadow of a pool—  
Calm silence here has been my only tool  
To hatch Eternity from minute things.  
A drop from off each feather slips and clings;  
I watch the slim pale bubbles gliding cool,  
Watch with the white intentness of a gull  
Where the slow ripples carve their barren rings.

But now!—With vibrant shock the radiant spear  
Of Beauty has transfixed my sombre being—  
Crimson with ecstasy it plunges sheer;—  
A fierce awareness tears the veil of seeing.  
Inchoate tenderness—a crystal spark—  
Melts, in the steep unmitigated dark . . .



DOROTHY ASHER



MARYBEL AVO BACHOFER



ELIZABETH BAER





ELIZABETH BLEE BAILEY



CAROLYN BULLOCK BEECHER

HELEN GRAHAM BELL





ISABEL HAMILTON BENHAM



VIRGINIA BURDICK



ANGELYN LOUISE BURROWS





ANNE MORRIS COLE



KATHLEEN CONE

ELIZABETH LAWSON COOK





ENID APPO COOK



CELIA GAUSE DARLINGTON



MARIE COTTMAN DIXON



ELIZABETH DOAK



JEAN DITMARS DONALD



MARY POLK DRAKE





CLARISSE ADELE DUBREUIL



ETHEL CHOUTEAU DYER



BERTHA BROSSMAN FAUST



DONITA FERGUSON



MARGARET DEAN FINDLEY

MARY ELIOT FROTHINGHAM





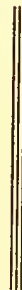
ANNE BEVERLEY GEORGE



ELIZABETH PURVIANCE GOW



JULIA WHEELER HARRIS





VIRGINIA HOBART



LOUISE HOWLAND



MIRIAM FRANCES HYMAN





CLARA DOROTHEA JENKINS



MARIANNA DUNCAN JENKINS



MARY JOY JOHNSON



ANN-MARIE KENNEDY



BARBARA KIRK



ROBIN KREUTZBERG





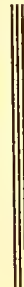
RUTH LEVY



ANNE KIRKHAM LORD



EMILY JANE LOW



GERTRUDE PAXSON MACATEE



SYLVIA MOSS MARKLEY



MARGARET LEE MCKELVEY





DOROTHY SUSAN MEAD



ELIZABETH MONGAN



ALWINE JANE MOORE



MARGARET OULD NUCKOLS



MARY OAKFORD

BETTY THOMSON OVERTON





DOROTHY PIZOR



FRANCES HASWELL ROBINSON



MARGARET BRIDE SCOTT





MARGARET SHAUGHNESSY



MIGNON SHERLEY

VIRGINIA FLORENCE SHRYOCK





KATHERINE LENA SIXT



VIRGINIA EVERETT SMITH



HELEN LOUISE SNYDER



SYDNEY BUCHANAN CALHOUN SULLIVAN



ETHEL PICARD SUSSMAN

FRANCES SWIFT TATNALL





MARTHA JEFFERSON TAYLOR



ESTHER EVANS THOMAS



HILDA VALL-SPINOZA THOMAS

CAROLINE HUSTON THOMPSON



KATHERINE THURBER



LOIS MATHER THURSTON





ELINOR ALICE TOTTEN



MARION HUMES TURNER



MARGARET RUTH UNANGST



EVELYN ALSWORTH WAPLES



MARY GRAHAM WEBSTER



KATHERINE MARY WINSHIP





BLANCHE WORTHINGTON



DOROTHY MILLER WRIGHT



SHEEMA SYLVIA ZEBEN





A  
D  
D  
R  
E  
S  
S



1  
9  
3  
1

- ADAMS, HELEN REDINGTON . . . . . 79 Mayo Ave., Greenwich, Conn.  
 ASHER, DOROTHY . . . . . 1858 N. 16th St., Philadelphia, Pa.  
 BACHOFER, MARYBEL AVA . . . . . 124 Windsor St., Reading, Pa.  
 BAER, ELIZABETH . . . . . Timonium, Md.  
 BAILEY, ELIZABETH BLEE . . . S. Park Blvd., Shaker Heights, Cleveland, Ohio  
 BATEMAN, ELLEN EDITH . . . . . Bryn Mawr Gables, Bryn Mawr, Pa.  
 BEECHER, CAROLYN BULLOCK . . . . . 1511 Mahantongo St., Pottsville, Pa.  
 BELL, HELEN GRAHAM . . . . . 1350 Tower Road, Hubbard Woods, Ill.  
 BENHAM, ISABEL HAMILTON . . . . . 362 W. Church St., Elmira, N. Y.  
 BISSELL, JANET WATSON . . . . . 21 E. 66th St., New York City  
 BLANCHARD, ELIZABETH ARDEN (Mrs. Samuel Kirkland)  
 . . . . . Haverford Mansions, Haverford, Pa.  
 BUNN, MARY JAMESON (Mrs. George Buchanan) . . . . . Rocky Mount, N. C.  
 BURDICK, VIRGINIA . . . . . Hampton, Conn.  
 BURROWS, ANGELYN LOUISE  
 . . . . . c/o Mrs. W. W. Freeman, 1140 Fifth Ave., New York City  
 BUTLER, ALICE ELEANOR (Mrs. Clement Clay Crawford)  
 . . . . . 115 E. 92nd St., New York City  
 CAPARN, RHYS  
 COLE, ANNE MORRIS . . . . . 2534 S. 20th St., Philadelphia, Pa.  
 CONE, KATHLEEN . . . . . Colonia, N. J.  
 COOK, ELIZABETH LAWSON . . . . . 400 Highland Ave., Towson, Md.  
 COOK, ENID APPO . . . . . 2258 Sixth St., N. W., Washington, D. C.  
 COWING, MARIE ANTOINETTE . . . . . 33 W. 87th St., New York City, N. Y.  
 CURDY, HELEN . . . . . 15 E. 56th St. Terrace, Kansas City, Mo.  
 DARLINGTON, CELIA GAUSE . . . . . 41 Walker St., Cambridge, Mass.  
 DEVAUX, MYRTLE (Mrs. Kenneth Winslow Howard)  
 . . . . . 548 Orange St., New Haven, Conn.  
 DIXON, MARIE COTTMAN . . . . . 426 N. 38th St., Omaha, Neb.  
 DOAK, ELIZABETH . . . . . 134 W. Coulter St., Germantown, Philadelphia, Pa.  
 DONALD, JEAN DITMARS . . . . . 1049 Park Ave., New York City  
 DOWNING, ELIZABETH COIL . . . . . Stockbridge, Mass.

DRAKE, MARY POLK . . . . . 447 N. E. 39th St., Miami, Fla.  
 DUBREUIL, CLARISSE ADELE Calle a, Esquina 2, Reparto La Sierra, Habana, Cuba  
 DYER, ETHEL CHOUTEAU . . . . . 29 Lenox Place, St. Louis, Mo.  
 FAUST, BERTHA BROSSMAN . . . . . 1135 Belmont Ave., Wyomissing, Pa.  
 FERGUSON, DONITA . . . . . 140 E. 46th St., New York City  
 FINDLEY, MARGARET DEAN . . . . . 2406 Second Ave., Altoona, Pa.  
 FROTHINGHAM, MARY ELIOT . . . . . 157 Bay State Road., Boston, Mass.  
 FRY, LUCY HOWARD . . . . . c/o Mrs. S. M. Vauclain, Jr. Rosemont, Pa.  
 GEORGE, ANNE BEVERLEY . . . . . 1831 Monument Ave., Richmond, Va  
 GOW, ELIZABETH PURVIANCE . . . . . 1133 W. Porphyry St., Butte, Mont.  
 GRISWOLD, CAROLYN HOWELL

Edgevale and Harvest Rds., Roland Park, Baltimore, Md.

HAMMAN, MARY SHARRETT . . . . . 10 Norwood Place, Guilford, Baltimore, Md.  
 HARRIS, JULIA WHEELER . . . . . 2400 16th St., Washington, D. C.  
 HOBART, VIRGINIA . . . . . 660 Prospect Ave., Winnetka, Ills.  
 HOLLANDER, ROSAMOND HUTZLER . . . . . 1802 Eutaw Place, Baltimore, Md.  
 HOWLAND, LOUISE . . . . . 100 W. University Parkway, Baltimore, Md.  
 HOWSON, ELIZABETH . . . . . 154 Walnut Ave., Wayne, Pa.  
 HUMPHREYS, BLANCHE BARLOW (Mrs. Wm. S. Gould, Jr.)

114 E. 90th St., New York City, N. Y.

HYMAN, MIRIAM FRANCES . . . . . 6823 Quincy St., Philadelphia, Pa.  
 JENKINS, CLARA DOROTHEA . . . . . 801 Morewood Ave. Pittsburgh, Pa  
 JENKINS, MARIANNA DUNCAN . . . . . 2517 Observatory Rd., Cincinnati, Ohio  
 JOHNSON, MARY JOY . . . . . 6700 Crandon Ave., Chicago, Ills.  
 JONES, KATHRYN FULLERTON (Mrs. Harden P. Galbraith) . . . . . St. Davids, Pa.  
 KENNEDY, ANN-MARIE . . . . . 521 N. 38th St., Omaha, Neb.  
 KIRK, BARBARA . . . . . 92 Merbrook Lane, Merion, Pa.  
 KREUTZBERG, ROBIN . . . . . Graham St., Bethlehem, Pa.  
 LEWIS, EMILY WESTWOOD . . . . . 12 Hortense Place, St. Louis, Mo.  
 LORD, ANNE KIRKHAM . . . . . 238 E. 68th St., New York City, N. Y.  
 LORD, KATHERINE ANINA (Mrs. Harold T. Armstrong)

Park Cottage, Galmpton, near Kingsbridge, South Devon, England.

LOW, EMILY JANE . . . . . 1521 Drury Lane, Kansas City, Mo.  
 LOWE, MARGARET COGGESHALL . . . . . 22 Glenbrook Drive, Stamford, Conn.  
 MACATEE, GERTRUDE PAXTON . . . . . 2324 California St., Washington, D. C.  
 MARKLEY, SYLVIA MOSS . . . . . 124 Market St., Sunbury, Pa.  
 MCKELVEY, MARGARET LEE . . . . . 765 Park Ave., New York City, N. Y.  
 MCKINNEY, ELIZABETH (Mrs. Gregory McIntosh) . . . . . Ridgemere, Wycliffe, Ohio  
 MEAD, DOROTHY SUSAN . . . . . 1661 Crescent Place, Washington, D. C.  
 MILLER, NANCY LEE (Mrs. Christopher L. Sainty) . . . . . Address Unknown  
 MONGAN, ELIZABETH . . . . . 24 Central St., Somerville, Mass.  
 MOORE, ALWINE JANE . . . . . 44 Laurel Rd., New Haven, Conn.  
 MOOS, DOROTHY JANE . . . . . 221 Wyncote Rd., Jenkintown, Pa.  
 NIELDS, ANNE . . . . . 1401 Broome St., Wilmington, Del.  
 NUCKOLS, MARGARET OULD . . . . . 1 Kenmar Rd., Menands, Albany, N. Y.  
 OAKFORD, MARY . . . . . Parmure Rd., Haverford, Pa.  
 OVERTON, BETTY THOMSON . . . . . 84 Grove St., New York City

PARKER, PAULINE STOCKTON (Mrs. James Carey, 3rd) . . . . . 4508 Rugby Road., Baltimore, Md.

PINCKNEY, FRANCES CRAIK . . . . . 3008 Seminary Ave., Richmond, Va.

PITTS, HELEN DORSEY . . . . . 1031 Canton Ave., Milton, Mass.

PIZOR, DOROTHY . . . . . 4615 Osage Ave., Philadelphia, Pa.

REA, MARGUERITE BAILEY . . . . . 107 E. Market St., York, Pa.

RICHARDS, BETSY HASTINGS (Mrs. John L. Horner, Jr.) . . . . . (Address unknown)

RIESER, CATHERINE LESHER . . . . . Moylan, Rose Valley, Pa.

ROBINSON, FRANCES HASWELL . . . . . 1185 Park Ave., New York City

ROESLER, PHOEBE ALICE INLAY . . . . .

SAPPINGTON, KATHERINE CURTIS . . . . . 73 Water St., Perth Amboy, N. J.

SCHOMBURG, ALICE DOROTHY . . . . . 141 Joralemon St., Brooklyn, N. Y.

SCOTT, MARGARET BRIDE . . . . . 502 S. 46th St., Philadelphia, Pa.

SCOTT, SYLVIA (Baroness Serge A. Korff) . . . . . Nassau St., Princeton, N. J.

SHAUGHNESSY, MARGARET . . . . . 188 Concord St., Framingham, Mass.

SHERLEY, MIGNON . . . . . 2600 Upton St., Washington, D. C.

SHYROCK, VIRGINIA FLORENCE . . . . . 48 Harvey St., Germantown, Philadelphia, Pa.

SIXT, KATHERINE LENA . . . . . 1359 Shaw View Ave., East Cleveland, Ohio

SMITH, VIRGINIA EVERETT . . . . . 24 Washington Ave., Schenectady, N. Y.

SNYDER, HELEN LOUISE . . . . . 103 Jefferson St., Brookville, Pa.

STEVENSON, HELEN MAXWELL . . . . . 5030 Hazel Ave., Philadelphia, Pa.

STILES, ALICE ELIZABETH . . . . . 203 Lynn Shore Drive, Lynn, Mass.

SULLIVAN, SYDNEY BUCHANAN CALHOUN . . . . . 2308 Wyoming Ave., Washington, D. C.

SUSSMAN, ETHEL PICARD . . . . . 3322 N. 16th St., Philadelphia, Pa.

TATNALL, FRANCES SWIFT . . . . . 1500 Rodney St., Wilmington, Del.

TAYLOR, MARTHA JEFFERSON . . . . . Page, Fayette County, W. Va.

THOMAS, ESTHER EVANS . . . . . Oakley Rd., Haverford, Pa.

THOMAS, HILDA VALL-SPINOZA . . . . . 122 W. Lanvale St., Baltimore, Md.

THOMPSON, CAROLINE HUSTON . . . . . 2500 Massachusetts Ave., Washington, D. C.

THURBER, KATHERINE . . . . . 215 E. 73rd St., New York City

THURSTON, LOIS MATHER . . . . . c/o Central Hanover Bank and Trust Co., 42nd and  
Madison Ave., New York City, N. Y.

TOTTEN, ELINOR ALICE . . . . . 2110 R St., N. W., Washington, D. C.

TURK, NATHENE . . . . . 148 Terrace Ave., Jamaica, L. I., N. Y.

TURNER, MARION HUMES . . . . . Parkton, Baltimore County, Md.

UNANGST, MARGARET RUTH . . . . . 5406 Pine St., Philadelphia, Pa.

WAPLES, EVELYN ALSWORTH . . . . . 214 Windemere Ave., Wayne, Pa.

WARFIELD, REBECCA EVELYN . . . . . 128 W. Lafayette Ave., Baltimore, Md.

WEBSTER, MARY GRAHAM . . . . . 2914 Scarborough Rd., Cleveland Heights, Ohio

WIDEMEYER, MAIDIE . . . . . South Miami, Dade County, Fla.

WINSHIP, KATHERINE MARY . . . . . 224 Georgia Ave., Macon, Ga.

WORTHINGTON, BLANCHE . . . . . Forest Grove, Pa.

WORTHINGTON, ELIZABETH COLEMAN . . . . . 415 Hawthorn Rd., Roland Park, Baltimore, Md.

WRIGHT, DOROTHY MILLER . . . . . 1734 DeKalb St., Norristown, Pa.

ZEBEN, SHEEMA SYLVIA . . . . . 6132 Locust St., Philadelphia, Pa.



Patronize  
Our  
Advertisers

Complimentary

JAMES DOAK JR.  
COMPANY

PHILADELPHIA



Worsted

Yarns

**BAILEY, BANKS & BIDDLE CO.**  
 Jewelers Silversmiths Stationers  
 ESTABLISHED 1832  
 Philadelphia

SCHOOL RINGS, EMBLEMS, CHARMS  
 AND TROPHIES  
 of the Better Kind

THE GIFT SUGGESTION BOOK  
 mailed upon request  
 Illustrates and Prices

Jewels, Watches, Clocks, Silver, China,  
 Glass, Leather and Novelties

from which may be selected distinctive  
 Wedding, Birthday, Graduation  
 and Other Gifts

Read at Ease  
 with the  
**"LITTLE SQUIRE"**  
 Book Rest

It makes the biggest book buoyant.  
 Let yourself, or a friend, read and  
 write in comfort for a lifetime.

Book at any angle you prefer.  
 Book swings 90° away at a  
 touch. Bronze plat-  
 ing, mahogany  
 finish on steel.

Read  
 at  
 Ease



\$9.50  
 Express  
 Collect

Any height from 24" to 40"  
 Your bookseller or  
**THE SQUIRE CO.**  
 1510 Chestnut Street  
 Philadelphia, Penna.



*Surroundings  
 of charm and  
 distinction . . .*

a cuisine of continental perfec-  
 tion . . . service of the highest  
 order . . . appealing to those  
 who live gracefully.

*Accommodations by  
 the day, month or year.*

**The  
 Warwick**

*Philadelphia's Smartest Hotel*  
 Locust Street at Seventeenth



1770

1926

**OLD FORGE INN**

Lincoln Highway

at

Malvern, Pennsylvania

Early American Antiques

No Reproductions

Tea Room open April to November

Attractive Rooms for Tourists

21 miles from Philadelphia

43 miles from Lancaster

Phone, Bryn Mawr 675

**JOHN J. McDEVITT**

PRINTING

Programs  
Bill Heads  
Tickets  
Letter Heads  
Booklets, etc.  
Announcements

1145 Lancaster Ave.

Rosemont, Pa.

Phone, Bryn Mawr 252

**CONNELLY'S**

**The Main Line Florists**

"SAY IT WITH FLOWERS"

Cash and Carry—15 Per Cent Off  
Regular Price

1226 LANCASTER AVENUE  
ROSEMONT, PA.

**Mehl & Latta, Inc.**

Lumber, Coal and  
Building Materials

ROSEMONT, PENNA.

Telephone, Ardmore 2966

**THE HARPER METHOD SHOP**

Pauline Smith

341 West Lancaster Avenue  
Haverford, Pa.

Complete Beauty Service

Bryn Mawr 840

**BRYN MAWR SUPPLIES CO.**

Auto Supplies  
Radiola, Majestic  
Atwater Kent  
Records

841½ LANCASTER AVENUE  
BRYN MAWR, PA.

**Haverford Pharmacy**

Henry W. Press, P.D.

Prescriptions, Drugs, Gifts

Haverford Avenue  
HAVERFORD, PA.

Bell Telephones,  
Ardmore 122, 2424, 2425

Prompt Automobile Delivery Service



# The Blum Store

Fashion Corner . . Chestnut at Thirteenth  
Philadelphia



Trig fashions  
for campus, classroom  
and week-end gaieties.

## College Inn and Tea Room

Service 8 A. M. to 7:30 P. M.  
Daily and Sunday

A LA CARTE BREAKFAST

Luncheon

Afternoon Tea

and

Dinner

A la Carte and Table d'Hote

Special Rates for Transient Guests  
of College Students

BRYN MAWR'S DOMINATING  
STYLE SHOP

**RAFELD'S**

826 Lancaster Avenue

A Store built upon style, quality, value,  
superior service ideals—and the realiza-  
tion of the solid value of public good will.



Marinello  
Cosmeticians

Hairdressers  
Permanent Waving

EUGENE METHOD

**PEACOCK BEAUTE  
SALON**

SEVILLE THEATRE BUILDING  
Phone 475 BRYN MAWR



*Complimentary*

NAN DUSKIN'S  
OWN STORE



126 1/2 Eighteenth St  
COR SANSON

Fashions  
for the woman who  
appreciates fashion  
. . . we study her  
charm and express it.

THE TOWNE HOUSE

1725 SPRUCE STREET

*Luncheons - Dinners*

Reservations made for special  
Luncheons, Dinners and Bridge Parties

Telephone, Pennypacker 9727

ANTIQUE

MODERN

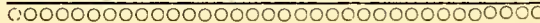
INTERNATIONAL SHOP

Arts and Crafts



Lincoln Highway at Church Road  
ARDMORE

COMPLIMENTARY





## Maxine-Dann

Millinery Importer

1127 CHESTNUT STREET  
PHILADELPHIA

Philadelphia's largest  
and Finest Millinery  
Store. Where Millinery  
is an Art.

NATIONALLY known for style in hats, catering to the younger set. We are now showing a complete collection of new Spring hats, the beret, the bicorn, the halo, the watteau, the bandeau and the novelty straws, very moderately priced.

Compliments

of

The College News

GOWNS—HOODS—CAPS

For all Degrees

Correct Outfits by the Originators of  
Academic Costumes in America



COTRELL and LEONARD

ALBANY, N. Y.  
College Dept. Est. 1832

## GENE'S SPECIALTY SHOP

1320 CHESTNUT STREET  
Thresher Building—Second Floor

CHARMING FROCKS FOR EVERY OCCASION

*Is your wardrobe in that sad condition  
That fails to give you social recognition?  
Weep not, sweet maid, for you can vent your passion  
Of always being at the height of fashion  
No matter how depleted are your means  
For you can buy the best for less at GENE'S!*

—COMPLIMENTARY—

Jenkins  
Arcade Building

STORES AND OFFICES

Pittsburgh, Pa.




*Official Photographer for Bryn Mawr College*

## WILLIAM SHEWELL ELLIS STUDIOS

1425 CHESTNUT STREET, PHILADELPHIA, PA.

*Also*

DUPONT BUILDING, WILMINGTON, DELAWARE



Francys  
17 East Lancaster Ave.  
ARDMORE, PA.

SMART DRESSES  
for Every Occasion

Tel., Ardmore 4112

COTTAGE TEA ROOM  
Montgomery Avenue  
BRYN MAWR

Luncheon  
Tea - Dinner

Special Parties      Guest Rooms

Phone, Bryn Mawr 362

Meet your friends at the  
Bryn Mawr Confectionery  
(Next to Seville Theatre Bldg.)  
THE RENDEZVOUS OF THE  
COLLEGE GIRL

Tasty Sandwiches, Delicious Sundaes  
Superior Soda Service

Compliments  
of  
THE LANTERN

CHATTER-ON TEA HOUSE

Luncheon—Afternoon Tea  
Dinner

Open Sundays

Telephone, Bryn Mawr 1185  
918 OLD LANCASTER ROAD

HENRY B. WALLACE  
Caterer and Confectioner  
22 and 24 Bryn Mawr Avenue  
BRYN MAWR

Philadelphia's Show Place  
of Favored Fashions

EMBICK'S  
For Things Worth While

Suits, Coats, Dresses, Hats

1620 CHESTNUT STREET

THE CHATTER BOX  
Special Evening and Sunday Dinners  
Telephone, Bryn Mawr 453  
839½ LANCASTER AVENUE



F R E N C H  
H A I R D R E S S E R S

Shampoo      Finger Waves  
Permanent Waves  
Hair Cut      Facial

*And Everything Concerning Your Hair*

A new shop located at 45 Lancaster Avenue, Ardmore

**JEANNETT'S**  
Bryn Mawr Flower Shop, Inc.



823 LANCASTER AVENUE  
Phone 570  
BRYN MAWR, PA.

**Jacques Ferber**

*Furs*

Cold Dry Air Storage  
Vaults on Premises

Telephone, Bryn Mawr 63

**BRINTON BROS.**

Fancy and Staple Groceries  
Orders Called For and Delivered



LANCASTER and MERION AVES.  
BRYN MAWR, PA.



1708 WALNUT STREET  
PHILADELPHIA



**LE CHAPEAU, Inc.**

**LINGERIE**

dainty and charming  
at amazingly Low Prices

**CHAPEAUX**

that will enhance Milady's Beauty  
\$6.00 Up

51 West Lancaster Avenue  
Ardmore, Pa.

Complimentary

The  
**Wilson Laundry Co.**

BRYN MAWR, PA.

Careful Handling and Quality  
Dry Cleaning a Specialty

Telephone  
Plaza 0210

**John P. Baer & Company**

**INVESTMENT BANKERS**

**CHARLES & SARATOGA  
BALTIMORE**

MEMBER  
BALTIMORE STOCK  
EXCHANGE

# *This Book*

IS A CREDIT TO THE STAFF

## OUR SPECIALIZED SERVICE

Individual, Personal "Coaching"

Originality in Design

Organized Layout

Quality beyond question

Past records of successful performance

Largest and up-to-the-minute production facilities

Many years' experience

**PHILADELPHIA - WEEKS  
ENGRAVING COMPANY**

*Educational Department*

29 NORTH SIXTH STREET  
PHILADELPHIA, PA.



# THE BOOK OF 1931

has been printed by the

**WESTBROOK**  
Publishing Company

in a plant built and equipped for  
producing school and college publi-  
cations in a neat, prompt and eco-  
nomical manner.

5800 N. Mervine St.  
Philadelphia, Pa.















