

1965

## Plan of Erdman Hall, Second (Entrance) Floor

Louis I. Kahn

[Let us know how access to this document benefits you.](#)

Follow this and additional works at: [http://repository.brynmawr.edu/erdman\\_docs](http://repository.brynmawr.edu/erdman_docs)



Part of the [Architecture Commons](#)

---

### Citation

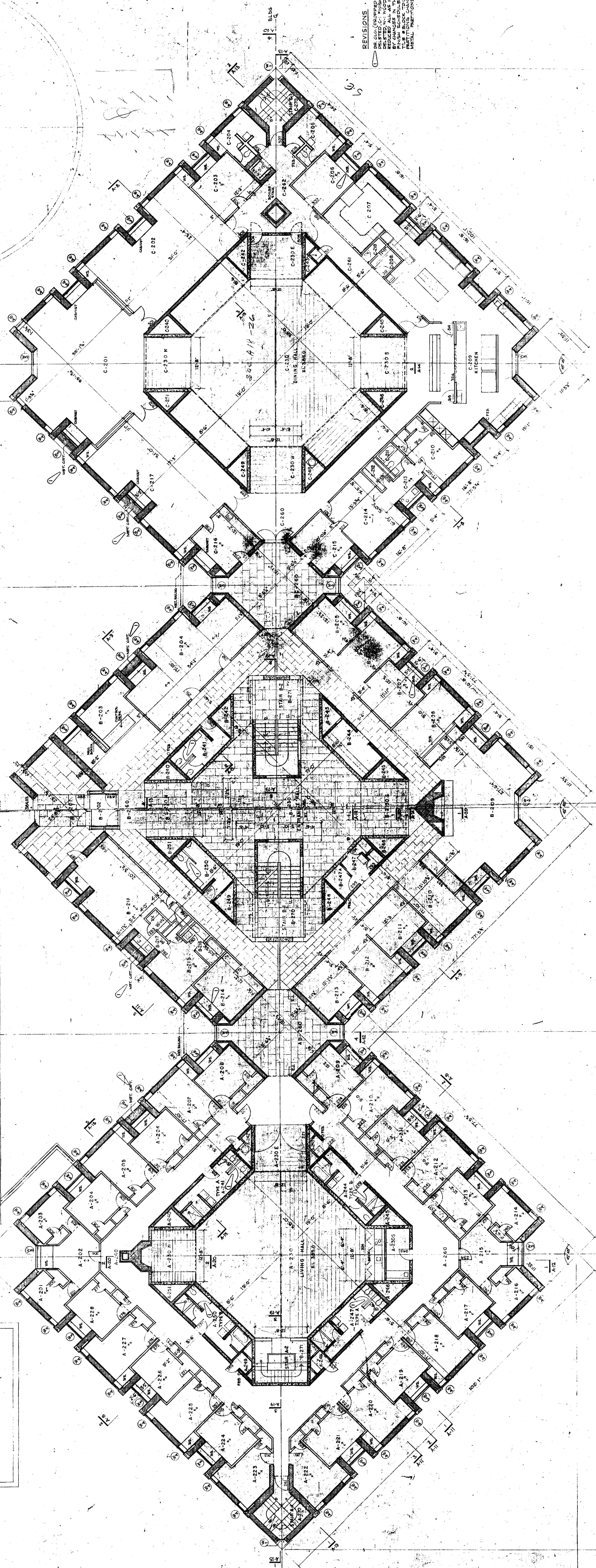
Kahn, Louis I., "Plan of Erdman Hall, Second (Entrance) Floor" (1965). *Erdman Hall Documents*. Paper 1.  
[http://repository.brynmawr.edu/erdman\\_docs/1](http://repository.brynmawr.edu/erdman_docs/1)

This paper is posted at Scholarship, Research, and Creative Work at Bryn Mawr College. [http://repository.brynmawr.edu/erdman\\_docs/1](http://repository.brynmawr.edu/erdman_docs/1)

For more information, please contact [repository@brynmawr.edu](mailto:repository@brynmawr.edu).



REVISIONS  
 1. ALL CHANGES TO BE MADE BY THE ARCHITECT  
 2. ALL CHANGES TO BE MADE BY THE ARCHITECT  
 3. ALL CHANGES TO BE MADE BY THE ARCHITECT  
 4. ALL CHANGES TO BE MADE BY THE ARCHITECT



FOR DESIGN & DIMENSIONS OF SITE WALLS & MARK SEE AZZ

SECOND (ENTRANCE) FLOOR PLAN EL 385.0  
 ARCHITECT: [Faint text]  
 ENGINEER: [Faint text]  
 CONTRACTOR: [Faint text]



ABBREVIATIONS  
 C-209 KITCHEN  
 C-230 DINING HALL  
 A-230 LIVING HALL

**ROOM FINISH SCHEDULE**

ROOM NO.	FINISH	REMARKS
A-201	FLOOR: POLISHED CONCRETE	
A-202	FLOOR: POLISHED CONCRETE	
A-203	FLOOR: POLISHED CONCRETE	
A-204	FLOOR: POLISHED CONCRETE	
A-205	FLOOR: POLISHED CONCRETE	
A-206	FLOOR: POLISHED CONCRETE	
A-207	FLOOR: POLISHED CONCRETE	
A-208	FLOOR: POLISHED CONCRETE	
A-209	FLOOR: POLISHED CONCRETE	
A-210	FLOOR: POLISHED CONCRETE	
A-211	FLOOR: POLISHED CONCRETE	
A-212	FLOOR: POLISHED CONCRETE	
A-213	FLOOR: POLISHED CONCRETE	
A-214	FLOOR: POLISHED CONCRETE	
A-215	FLOOR: POLISHED CONCRETE	
A-216	FLOOR: POLISHED CONCRETE	
A-217	FLOOR: POLISHED CONCRETE	
A-218	FLOOR: POLISHED CONCRETE	
A-219	FLOOR: POLISHED CONCRETE	
A-220	FLOOR: POLISHED CONCRETE	
A-221	FLOOR: POLISHED CONCRETE	
A-222	FLOOR: POLISHED CONCRETE	
A-223	FLOOR: POLISHED CONCRETE	
A-224	FLOOR: POLISHED CONCRETE	
A-225	FLOOR: POLISHED CONCRETE	
A-226	FLOOR: POLISHED CONCRETE	
A-227	FLOOR: POLISHED CONCRETE	
A-228	FLOOR: POLISHED CONCRETE	
A-229	FLOOR: POLISHED CONCRETE	
A-230	FLOOR: POLISHED CONCRETE	
A-231	FLOOR: POLISHED CONCRETE	
A-232	FLOOR: POLISHED CONCRETE	
A-233	FLOOR: POLISHED CONCRETE	
A-234	FLOOR: POLISHED CONCRETE	
A-235	FLOOR: POLISHED CONCRETE	
A-236	FLOOR: POLISHED CONCRETE	
A-237	FLOOR: POLISHED CONCRETE	
A-238	FLOOR: POLISHED CONCRETE	
A-239	FLOOR: POLISHED CONCRETE	
A-240	FLOOR: POLISHED CONCRETE	
B-201	FLOOR: POLISHED CONCRETE	
B-202	FLOOR: POLISHED CONCRETE	
B-203	FLOOR: POLISHED CONCRETE	
B-204	FLOOR: POLISHED CONCRETE	
B-205	FLOOR: POLISHED CONCRETE	
B-206	FLOOR: POLISHED CONCRETE	
B-207	FLOOR: POLISHED CONCRETE	
B-208	FLOOR: POLISHED CONCRETE	
B-209	FLOOR: POLISHED CONCRETE	
B-210	FLOOR: POLISHED CONCRETE	
B-211	FLOOR: POLISHED CONCRETE	
B-212	FLOOR: POLISHED CONCRETE	
B-213	FLOOR: POLISHED CONCRETE	
B-214	FLOOR: POLISHED CONCRETE	
B-215	FLOOR: POLISHED CONCRETE	
B-216	FLOOR: POLISHED CONCRETE	
B-217	FLOOR: POLISHED CONCRETE	
B-218	FLOOR: POLISHED CONCRETE	
B-219	FLOOR: POLISHED CONCRETE	
B-220	FLOOR: POLISHED CONCRETE	
B-221	FLOOR: POLISHED CONCRETE	
B-222	FLOOR: POLISHED CONCRETE	
B-223	FLOOR: POLISHED CONCRETE	
B-224	FLOOR: POLISHED CONCRETE	
B-225	FLOOR: POLISHED CONCRETE	
B-226	FLOOR: POLISHED CONCRETE	
B-227	FLOOR: POLISHED CONCRETE	
B-228	FLOOR: POLISHED CONCRETE	
B-229	FLOOR: POLISHED CONCRETE	
B-230	FLOOR: POLISHED CONCRETE	
B-231	FLOOR: POLISHED CONCRETE	
B-232	FLOOR: POLISHED CONCRETE	
B-233	FLOOR: POLISHED CONCRETE	
B-234	FLOOR: POLISHED CONCRETE	
B-235	FLOOR: POLISHED CONCRETE	
B-236	FLOOR: POLISHED CONCRETE	
B-237	FLOOR: POLISHED CONCRETE	
B-238	FLOOR: POLISHED CONCRETE	
B-239	FLOOR: POLISHED CONCRETE	
B-240	FLOOR: POLISHED CONCRETE	
C-201	FLOOR: POLISHED CONCRETE	
C-202	FLOOR: POLISHED CONCRETE	
C-203	FLOOR: POLISHED CONCRETE	
C-204	FLOOR: POLISHED CONCRETE	
C-205	FLOOR: POLISHED CONCRETE	
C-206	FLOOR: POLISHED CONCRETE	
C-207	FLOOR: POLISHED CONCRETE	
C-208	FLOOR: POLISHED CONCRETE	
C-209	FLOOR: POLISHED CONCRETE	
C-210	FLOOR: POLISHED CONCRETE	
C-211	FLOOR: POLISHED CONCRETE	
C-212	FLOOR: POLISHED CONCRETE	
C-213	FLOOR: POLISHED CONCRETE	
C-214	FLOOR: POLISHED CONCRETE	
C-215	FLOOR: POLISHED CONCRETE	
C-216	FLOOR: POLISHED CONCRETE	
C-217	FLOOR: POLISHED CONCRETE	
C-218	FLOOR: POLISHED CONCRETE	
C-219	FLOOR: POLISHED CONCRETE	
C-220	FLOOR: POLISHED CONCRETE	
C-221	FLOOR: POLISHED CONCRETE	
C-222	FLOOR: POLISHED CONCRETE	
C-223	FLOOR: POLISHED CONCRETE	
C-224	FLOOR: POLISHED CONCRETE	
C-225	FLOOR: POLISHED CONCRETE	
C-226	FLOOR: POLISHED CONCRETE	
C-227	FLOOR: POLISHED CONCRETE	
C-228	FLOOR: POLISHED CONCRETE	
C-229	FLOOR: POLISHED CONCRETE	
C-230	FLOOR: POLISHED CONCRETE	
C-231	FLOOR: POLISHED CONCRETE	
C-232	FLOOR: POLISHED CONCRETE	
C-233	FLOOR: POLISHED CONCRETE	
C-234	FLOOR: POLISHED CONCRETE	
C-235	FLOOR: POLISHED CONCRETE	
C-236	FLOOR: POLISHED CONCRETE	
C-237	FLOOR: POLISHED CONCRETE	
C-238	FLOOR: POLISHED CONCRETE	
C-239	FLOOR: POLISHED CONCRETE	
C-240	FLOOR: POLISHED CONCRETE	